

- 1200 signatures on petition to reopen the Kandos-Rylstone rail link
- Research on the Rylstone Autograph Quilt continues for new book
- RDHS and Social Media—bringing RDHS to the top of search lists

INSIDE
THIS ISSUE:

Rylstone Quilt	2
Bylong Cheese Factory	2
Edward DAWSON	3
Interesting News	3
Tarwyn Park Visit	3
RDHS and Social Media	4
Family History	4

RDHS Newsletter

JUNE 2017

1200 sign on the Kandos-Rylstone rail line

A petition of 1200 signatures calling for the reopening of the Kandos-Rylstone rail link for heritage and tourism purposes, has been presented to Member for Bathurst Paul Toole.

The Kandos Museum and Lithgow State Mines Railway propose the formation of the Kandos-Rylstone Rail Heritage Precinct, which would comprise the Rylstone, Kandos and Clandulla stations.

As well as a weekend tourist service between Kandos and Rylstone and the eventual restoration of the stations over time.

The 7km rail link between from Kandos to Rylstone is non-operational, however the Kandos Museum and Lithgow State Mines Railway contest that it requires little work to return

it to operation.

Kandos Museum president, Buzz Sanderson, on behalf of partners Lithgow State Mine Railway presented member for



The Rylstone Rambler approaching Rylstone railway station in February 2016

Bathurst Paul Toole with the petition on Friday.

We've conducted a petition over the last few months for

reopening the railway between Kandos and Rylstone so we can undertake tourist operations," he said.

"We've had a fantastic response, 1227 people put their name down in support of our petition both online and on paper.

"We would very much like to see this happen and I think you [Paul Toole MP] would too – but I don't want to put words in your mouth."

For the full story, see the original article in the Mudgee Guardian, [1200-sign-on-the-rail-line](#), accessed 2 June 2017.

Double murder in Kandos (1951)

A seemingly little-known murder occurred in Kandos in July 1951.

According to news reports, "a man and a woman were found murdered in a vacant allotment next to the Kandos Hotel on Tuesday afternoon [17 July 1951]. Police believe they had been dead for 24 hours before their bodies were found.

The victims were: Gladys MINES (38) a married woman living with her husband at Angus Avenue, Kandos, and Claude William ROGERS (55) single, a labourer at the Kandos cement works, of Rodgers Street, Kandos. Mrs. MINES had a son aged 13. Police said Mrs. MINES had been smothered to death and

that ROGERS had been stabbed with a knife four times in the neck and eight or nine times in the back."

A Yugoslav immigrant was found guilty of the murders and later hanged himself in prison.

(Source: Mudgee Guardian and North-Western Representative, 19 July 1951, page 1)

Rylstone Autograph Quilt



Rylstone Autograph
Quilt: 1915
(AWM REL28488)
(Photo: Dan Hatton)

Research for the Rylstone Autograph Quilt book project remains ongoing. Dan Hatton has continued the original exhibition research with the intention of writing a book on those who signed the quilt in 1915 in the context of related fundraising events for the war effort.

Some highlights found during recent research include:

- Second female WWI serviceperson, a relative of the DAWSON family of Henbury, identified among

those who signed the quilt

- A surprising number of commercial travelers (travelling salesman)
- A sad case of lost love
- Families that seem to be genetically-gifted with long lives

A website is being constructed for the book project; however, the following pages provide some information.

Online listing of all names at:

rylstonequilt.blogspot.com.au

Facebook page sharing updates and making connections with relatives at:

www.facebook.com/RylstoneAutographQuilt/

For a copy of the list of names or to claim your connection to relatives or ancestors named on the quilt send your details to connections@rylstoneautographquilt.com.au

Chinese in early Rylstone

Indentured Chinese labourers came to Australia from the 1840s to supplement a shortage of labour in the pastoral industry, including local properties such as *Dabee* and *Rawden*, where they were often employed as shepherds. Some Chinese also joined the gold rush on the Turon River and in the rolling hills of Ophir. Later, Chinese market gardeners established themselves in Rylstone on the

banks of the Cudgegong River, near the location of the original Rylstone bridge; however, little evidence of their presence remains.

The historical society's collection doesn't hold any early photographs of the gardens although one appears to show the buildings in which they lived.

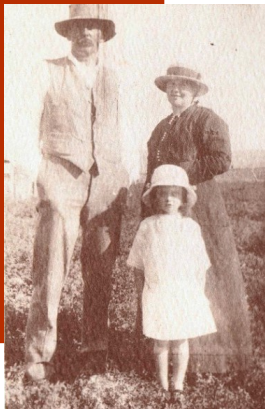
Moreover, there is no evidence of Chinese burials in

the Rylstone cemetery although it is known that several Chinese were buried there. Were they exhumed and reinterred in their native China or are their graves simply unmarked? Cemetery records don't appear to offer any clarification.

Does anyone know if there is any evidence of the Chinese in Rylstone or the surrounding areas?

Bylong Cheese Factory

Alan, Ida
and Jean
SAXELBY,
1915
(Photo:
RDHS
Collection)



In 1910 a cheese factory was established at Bylong. The factory was under the management of Mr. Alan SAXELBY and owned by Sydney interests. This factory was situated thirty miles from Rylstone.

In 1912, fine examples of Bylong cheese was included in the Western District Exhibit. Bylong cheese was considered to be one of the best brands to go on the Sydney market.

By 1914, Bylong had an up-to-date factory that produced quality butter and cheese. Can anyone help identify where

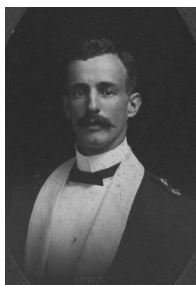
this factory was located, or any other information relating to it?

Do any photographs exist of the factory and does anyone have any information relating to Alan SAXELBY, his wife, Ida Louisa Maud SAXELBY (nee DUNN), or their daughter, Jean?

Captain Edward DAWSON (1880-1915)

Captain Edward DAWSON, killed in action, was the eldest son of Mr. and Mrs. James [Jessie] DAWSON, L.S., of Rylstone, and was born at Ilford in 1880. He was educated at the Rylstone Public School, under Mr. W. T. ANDERSON, now headmaster of Kogarah Superior Public School, under whose tuition he passed several University examinations. Passing the Civil Service Examination in 1900, he was appointed the same year to a clerkship in the General Post Office, Sydney, where he rose through various branches to a high position in the telephone department. His military

career started in 1904 in the old Australian Rifle Regiment as second lieutenant, eventually being promoted to captain in



Captain Edward DAWSON

c.1914

(Photo: Noel DAWSON)

1909. Upon the introduction of compulsory training he was attached to the 29th Regiment, Rozelle area, and at the outbreak

of the war he volunteered for active service almost at once, but no opening offering in the local forces he accepted a command as lieutenant in charge of the Imperial Reserves, leaving in the *Miltiades* and arriving at Plymouth in December, 1914. Returning to Egypt, he again volunteered for the front, and in his last letter received he stated he was leaving for the Dardanelles with the rank of captain on June 25.

(1915 'MEN OF THE DARDANELLES.', *The Sydney Morning Herald* (NSW : 1842 - 1954), 20 August, p. 6. , viewed 15 May 2017, <http://nla.gov.au/nla.news-article15608460>)

Interesting news...

Jessie Hickman

Jennifer Gerhard, who has written a script on the life of Jessie Hickman, recently spent some time with Shirley Tunnickliff. Shirley found that Jennifer was "a really interesting person to talk to". The film won't be out for a few years yet so we can look

forward to more visits from Jennifer.

Tarwyn Park

GML Heritage Senior Consultant, Minna Muhlen-Schulte, made a recent visit to the Cottage Museum to get local input on *Tarwyn Park* at Bylong in preparation for a report for the Government

Planning Committee and the National Trust.

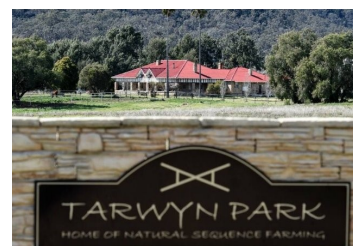
Trash and Treasure Day

RDHS is holding a Trash and Treasure day on 3rd June. Anyone interested in holding a stall please contact Shirley on (02) 6379 1121.

Committee visits Tarwyn Park at Bylong

RDHS Committee members visited *Tarwyn Park*, Bylong, on Easter Monday to visit the sites where buildings are going to be removed. RDHS was also given some sandstone blocks which are planned for use around the Cottage Museum area. Special thanks to Ed and Terry for picking

these up. Committee members were able to take photos of all the buildings around *Tarwyn Park*, which included the Catholic Church, old Post Office, school and the old hall. President, Shirley Tunnickliff, found them all very interesting.



Tarwyn Park, Bylong



Rylstone and District Historical Society

28-30 Louee Street
PO Box 66
Rylstone NSW 2849

Phone: (02) 6379 1840

Email: rylstonehistory@westnet.com.au

Web: www.rylstonehistory.org.au

Facebook: @RylstoneHistoricalSociety

Facebook: @BridgeViewInn

Facebook: @RylstoneCottageMuseum

Twitter: @RylstoneHistSoc

2016-2017 Committee

President: Shirley TUNNICLIFF

Vice President: Ed WINDLE

Treasurer: Lori GRABHAM

Secretary: Lynne SYME

Ordinary Committee Members:

Allan WILLS, Anne WARD and Terrence KEEN

Public Officer: Carolyn BARLOW

Patron: George McDONALD

Newsletter Editor: Dan HATTON

Newsletter contributions welcomed.

Contact newsletter@rylstonehistory.org.au

RDHS & Social Media

Rylstone and District Historical Society's first encounter with social media was a Facebook page set up for the Cottage Museum, which had a small following that has grown to 169 likes.

More recently, Facebook pages have also been created for the Bridge View Inn (as a B&B business page) and for the Rylstone and District Historical Society as a separate entity. The RDHS Facebook page has surpassed the original interest in the Cottage Museum in terms of 'likes' sitting at 272 likes.

In addition to the website, RDHS has Twitter, Pinterest and Instagram accounts although these are still in the early stages of development.

RDHS's foray into social media has improved our position in Google search results. Prior to implementing these changes, the society's webpage was not listed until page 8 of typical searches for 'Rylstone history', whereas now the society's webpage is returned on the first page of search results. This is a consequence of crosslinking our website and our new social media accounts with reputable websites, thus establishing a better position for ourselves when Google indexes websites.

Some fairly simple changes that cost nothing to implement have improved our web exposure tremendously.



Family History Group

The Family History Research Group meet at the Kandos Library on the first Friday of the month at 9.00am.

Fiona Nevell from the Family Research Group manages a Facebook page, Rylstone & District Local & Family History Connection, where she shares many interesting genealogical and heritage articles. The page can be found at www.facebook.com/groups/140272439320083/.



KIRKLANDs at Oakborough, Rylstone, c.1936-1940
(Photo: Shirley TUNNICLIFF, via Old Images of Rylstone District)